



**Celtic
Media
Festival**

The International
Summit of Sound
and Screen

HOW TO ENTER GUIDE 2026

TORC AWARDS FOR EXCELLENCE





HOW TO ENTER GUIDE 2026

Eligibility

Why Enter?

Entry Fees

Timeline

Categories

Step by Step Guide

Team

Deadline

INTRODUCTION

The Celtic Media Festival is an annual 3-day summit that promotes the languages and cultures of the Celtic Nations and Regions in media. It combines a major conference of seminars and masterclasses with presentation of coveted prizes in an international competition across all the main content genres in TV, radio, film and digital media.



ELIGIBILITY

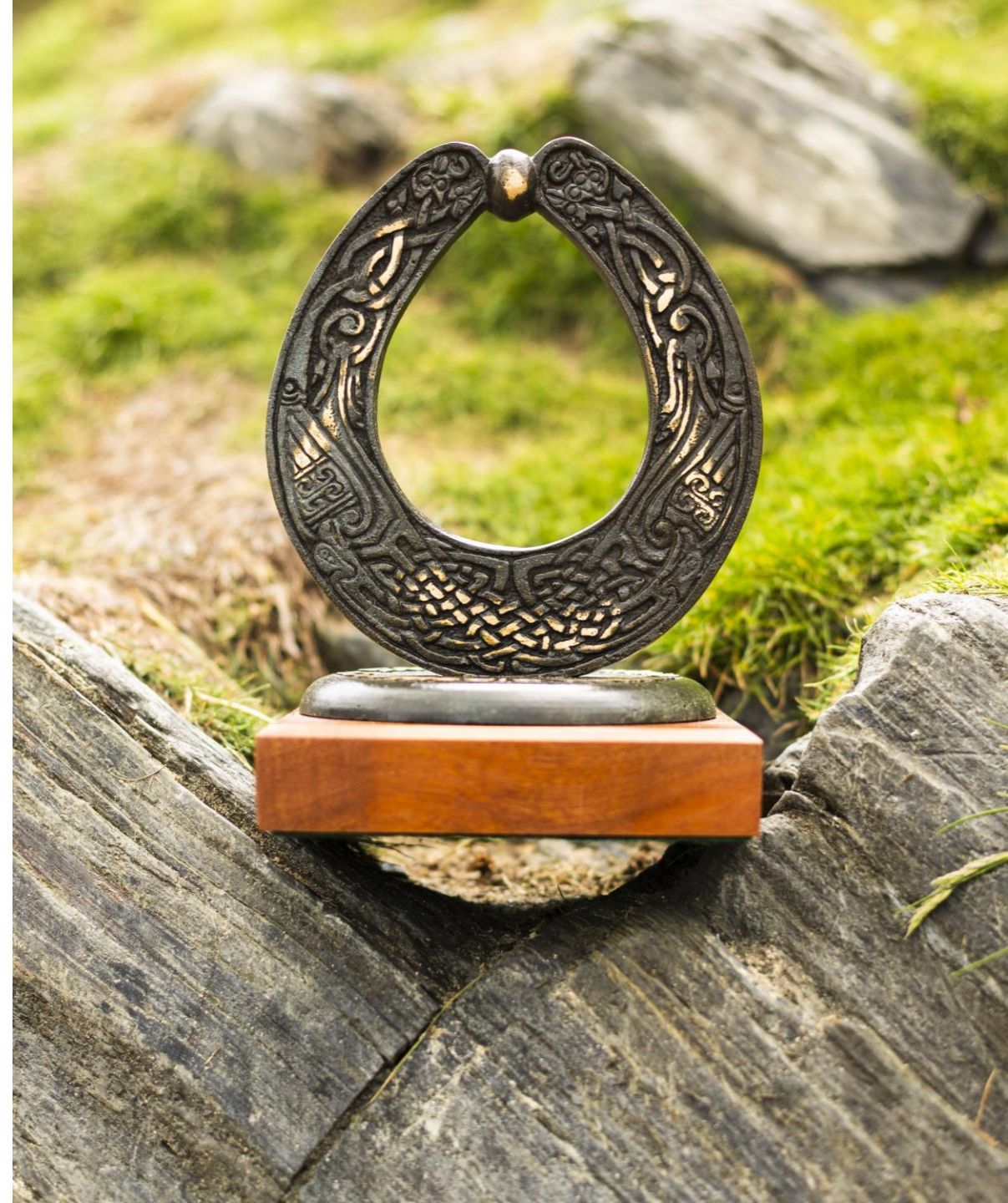
What is eligible to enter?

Entries from the Celtic countries and regions* are accepted on any subject. Entries from outside the Celtic countries are accepted where the subject matter relates to aspects of life and culture, past, present or future of a Celtic country.

The festival competition is open to original productions first broadcast on traditional channels or online platforms, or publicly screened to an audience of over 50 between **1st November 2024 and 31st October 2025**.

Productions previously entered for competition at the CMF, in any form, will not be accepted.

* The Celtic countries and regions include Brittany, Cornwall, Ireland, Isle of Man, Scotland and Wales and regions of the Iberian Peninsula. The board retain the right to extend or limit this list.



Why enter?

- Demonstrate your production skills against your rivals and peers
- Demonstrate your talent and skills to the wider media industry
- To stand out from the competition
- Gain fantastic PR opportunities by promoting your company as award winning
- Reward your hardworking team(s) and boost morale
- Highlight the importance of the Celtic Media industry
- Showcase your work to commissioners and broadcasters



	Price in £
SCREEN	
Television Broadcasters	150
Independent Television, Film & Video Companies	70
SOUND	
Broadcasters	120
Independent Producers/Community Stations	60
WORKSHOPS, INDIVIDUALS and STUDENTS	20

ENTRY FEES

TIMELINE

September 2025	6 Nov 2025	Nov 2025 – Feb 2026	March 2026	2-4 June 2026
Call for Entries Opens	Call for Entries Closes at 12pm	National Jury Viewings	Nominees Announced	Winners Announced at the Festival in Belfast

CATEGORIES - SCREEN

Animation

This category is for productions from all areas of animation. Entries may be a feature film, a one-off programme, a short animation or a single episode from a series. Where the production is mixed media, i.e. a combination of animation and live action, at least 60% of the running time must be animated.

Judging will be based on the quality of the animation, the originality of the storytelling, and the overall creative execution.

Arts

This category is for programmes and films that celebrate, examine, or critically analyse the arts, including but not limited to visual arts, literature, and performance.

Exclusions: This category does not include recordings of live or staged performances that are not part of a documentary or critical programme.

Children's Programme

This category is for a wide range of fiction and non-fiction films and programmes for children, designed to entertain and inform. Entries may be drama, animation, documentary, or factual programming.

The programme should demonstrate a clear connection to its target audience and be a compelling piece of work.

The entrant should specify the particular age of the audience the programme is aimed at on the entry form.

CATEGORIES - SCREEN

Comedy

This category is for comedy formats, including situation comedies, sketch shows and comedy panel shows.

Entries should demonstrate originality and quality in performances and direction.

Current Affairs

This category recognises single programmes, or programmes from a strand, that are primarily concerned with unfolding current affairs. Entries should demonstrate journalistic integrity and provide insights into a significant news story or topic, presented in an investigative and/or immediate manner. Judging will be based on the quality of the journalism, the strength of the evidence presented, and the impact of the investigation.

Drama Series

This category is for a drama series both limited and continuing.

One episode should be submitted to showcase both story and character development within the context of the series.

Judging will consider the quality of the writing, performances, and the overall execution of the episode within the context of the series.

Submission Requirement: In addition to providing a synopsis of the episode, entrants must include a synopsis of the series and mention the series and episode number in the description.

CATEGORIES - SCREEN

Entertainment

This category is for formatted studio entertainment shows, including competitive reality shows, quiz shows, variety shows, and game shows. Entries may be a single programme or a single episode from a series. Judging is based on the ability to entertain through format, performance, and production.

Factual Entertainment

This category is for lifestyle, magazine/discussion and formatted documentary - reality. Programmes or series in which a situation or topic is treated or created through real people, or which tell their story by following real-life characters. Stand-alone single programmes or one episode from a series may be entered.

Judging will consider the originality of the format, the entertainment value, and the quality of the production.

Factual Series

This category is for a series of more than one factual programme linked through a unified approach, narrative, or thematic development of a subject matter. Only one episode from the series may be entered as representative of the series. Judging will consider the strength of the narrative, the depth of the research, and the creative vision of the series.

Submission Requirement: In addition to providing a synopsis of the episode, entrants must include a synopsis of the series and mention the series and episode number in the description.

CATEGORIES - SCREEN

Feature Documentary (61 minutes or more)

This category is for a non-fiction film with a running time of 61 minutes or more. The film must be predominantly composed of documentary footage, though it may employ other techniques such as partial re-enactment, stock footage, or animation. The emphasis must be on fact, not fiction. Judging will be based on the quality of the storytelling, the insight offered into the subject, and the creative and technical skill of the production.

History

This category is for documentaries that focus on historical events or people and should offer new perspectives or a compelling narrative. Drama-docs that use dramatisation to support factual storytelling are also eligible.

Judging will consider the quality of the research, the clarity of the narrative, and the programme's ability to offer fresh perspectives on the past.

Live Event

This category is for programmes that capture the energy and excitement of live events. Any type of live event is eligible, including festivals, concerts, studio shows, performances, comedy shows, and sporting events.

Judging will be based on production values, quality of direction as well as the ability to give the viewer an immersive experience and project a sense of occasion to the audience.

CATEGORIES - SCREEN

Short Drama (up to 30 mins)

This category is for a stand-alone, self-contained dramatic production that is not a part of a series.

Judging will consider the originality and creative vision of the film, the quality of the script and performances, and the effectiveness of the direction and production values. The overall impact and how the story resonates with the viewer will also be a key factor.

Short Form (up to 20 minutes)

This category is for productions originally published on social media or an online channel (e.g., broadcast players) with a maximum duration of 20 minutes, including opening titles and credits.

Productions that have subsequently been broadcast on a linear channel are also eligible.

The entry should demonstrate a creative and effective use of the online medium. Judging will consider the originality of the content, the effective use of the online medium, and its ability to engage an audience.

Submission Requirement: A link to the original online broadcast must be provided, or proof of online broadcast must be supplied

CATEGORIES - SCREEN

Single Documentary (up to 60 mins)

This category is for a one-off documentary with a running time of up to 60 minutes. Entries should offer a real insight into the world they explore, with judges looking for a compelling narrative, strong emotional resonance, and a high degree of creative and technical skill.

Sports Documentary

This category is for programmes, both standalone or part of a series, that capture or celebrate the personalities of sport or the sport itself. The emphasis should be on the passion and spirit of the sport, not on live event coverage. Programmes based on archive footage are eligible.

Judging will be based on the quality of the storytelling, the insight provided, and the ability to capture the spirit of the sport.

Single Drama (over 30 mins)

This category is for a single, one-off dramatic production with a running time of over 30 minutes. Entries can be made for television, online, or for theatrical release. Judging will consider the originality and creative vision of the production, the quality of the script and performances, and the effectiveness of the direction and production values. The overall impact and how the story resonates with the viewer will also be a key factor.

NEW CATEGORY - SCREEN

Presenter of the Year (Screen)

This category celebrates outstanding broadcast talent on screen. Entries should demonstrate outstanding broadcasting skills, including innovation, creativity, and audience engagement, while showcasing a distinctive broadcast personality and a strong ability to connect with their target audience. Submission Requirement: Entries require up to 3 examples of a presenters work throughout the year. These can be full episodes, or excerpts from episodes. A bio of the presenter is also required.

CATEGORIES - SOUND

Comedy

This category is for all forms of scripted and unscripted comedy, including sketch shows, panel shows, and sitcoms. Judging will consider the originality of the writing, the quality of the performances, and the comedic timing.

Documentary

This category is for a one-off documentary that demonstrates creative use of the medium. Judging will consider storytelling, analysis of subject matter, and production values. A minimum speech content of 70% is required.

Drama

This category is for scripted audio fiction. Entries may include original single dramas, an episode from a drama series, or adaptations. Judging will consider the quality of the script, the strength of the voice performances, and the creative use of sound design and direction. The overall emotional impact and how the story resonates with the listener will also be a key factor.

CATEGORIES - SOUND

Entertainment

This category is for a wide range of unscripted programming, including magazine shows, talk shows, conversational podcasts, morning shows, drivetime programmes, and phone-ins. Judging will be based on the host's personality, the programme's creative energy, and its ability to engage listeners.

Submission Requirement: Entries must be a single episode, not a compilation.

Factual Series

This category is for a series of more than one factual programme linked through a unified approach, narrative, or thematic development. Only one episode from the series may be entered as representative of the series. Subject matter can include but is not limited to arts, culture, crime, true crime, science, technology, lifestyle, personal stories, and societal issues. Judging will consider the strength of the narrative, the depth of the research, and the creative use of sound to tell the story.

History

This category is for audio documentaries that focus on historical events or people and should offer new perspectives or a compelling narrative.

Judging will consider the quality of the research, the compelling nature of the story, and the creative use of the medium.

CATEGORIES – SOUND

Music Programme

This category is for programmes that celebrate music. Any genre of music is accepted. This is a category for programmes that are part of the regular schedule but have a specialist music remit. Consideration given to the relevance of the music selection and the presenter's input.

Exclusions: This category does not include documentaries on music.

Presenter of the Year (Sound)

This category celebrates outstanding broadcast talent on radio from both factual and entertainment genres. Entries should demonstrate outstanding broadcasting skills, including innovation, creativity, and audience engagement, while showcasing a distinctive broadcast personality and a strong ability to connect with their target audience.

Submission Requirement: Entries require a compilation, not exceeding one hour, containing at least five examples of the individual's best work throughout the year.

Sports Programme

This category celebrates any programme whose editorial content is specifically dedicated to the coverage, discussion, or exploration of sporting events and/or issues. This includes documentaries and magazine-style formats. Judging will consider the quality of the editorial content, the insight offered into the sport, and the overall production..

CATEGORIES – SOUND

Radio Station of the Year

This category recognises a station's excellence, its energy, diversity in programming, and the continuing quality of its production. The judging will focus on a station's connection and accord with its audience.

Submission Requirement:

- Entries must be a compilation, not exceeding one hour, that celebrates the station's successes and highlights from 1st November 2024 to the 31st of October 2025.

The compilation must include at least five examples of output that showcases the wide range of talent across the station.

- A completed application form must also be submitted, which will include a short supporting statement of the station's aims and highlights, a weekly schedule with programme details, and any additional information thought to be relevant.
- A transcript in English must also be provided.

SPIRIT OF THE FESTIVAL

The Spirit of the Festival Gold Torc will be presented to a screen entry wholly or substantially in a Celtic language. It is the only award reserved to promote Celtic languages on film and television.



STEP BY STEP GUIDE

ENTER HERE: <https://celticmediafestival.awardstage.com/>

STEP 1 – CREATE YOUR ENTRY

- Click on the '**Create Entry**' button on your dashboard to begin the process. The awards schedule and the countdown will tell you if the awards are open for entries and how long you have left to submit.

STEP 2 – CATEGORIES

- Select the category** you'd like to enter by clicking on '**Enter**' on the category of your choice. You can also view all categories as a list.
- Once you've selected your category, a **draft entry** is created and you will be presented with the entry form relevant to that category.

STEP BY STEP GUIDE

STEP 3 – ENTRY FORM

- **Filling in the entry form** – fields marked with * are mandatory, but you can save your entry as a draft without filling in all of those required fields, and complete them later if you wish.

IMPORTANT – if you click the 'Close' button at the bottom of the form, all inputted information other than the entry title/company name and category will be lost.

- **Save as a draft** – changes are **not automatically saved**. Ensure you click 'Save Draft' to save what you have completed, and enable you to return and complete/submit at a later time (be mindful of the entry closing date!).

STEP BY STEP GUIDE

•**Media uploads**– when uploading media to the Awardstage system, please follow the below guidelines.

Full Video Programme : .mp4 or .mov

Full Audio Programme : .mp3

Video Clip (30 seconds) : .mp4 or .mov

Audio Clip (20 seconds): .mp3 or .wav

Video File Size Reference

30 minutes or less	1 hour	2 hours
400 MB - 750 MB	800 MB - 1.5GB	1.5GB to 2.5GB

Image

Format: Jpg or PNG

Minimum Image Dimensions: 1920x1080
(Landscape)

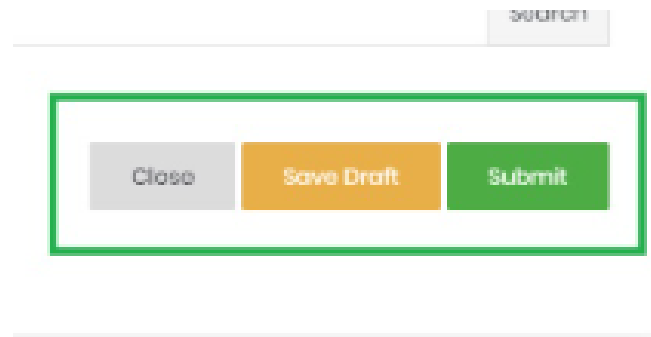
Image examples:

Promo image, Production Still, Radio
Presenter Headshot

STEP BY STEP GUIDE

STEP 4 – SUBMIT THE ENTRY

- Once you have completed the entry form, click on the green '**Submit**' button at the bottom of the form. You will then see a pop-up message that your entry has been successfully submitted. You will also receive an email confirmation of your submission.
- Your entries – draft or submitted – can be viewed via your entrant dashboard.



STEP BY STEP GUIDE

HOW TO SUBMIT INTO MORE THAN ONE CATEGORY / CLONE AN ENTRY

If you have a draft entry, or one that you have already submitted, you can clone (i.e. copy) it into a second category if you wish. This will save you time as you won't need to complete any common fields between the two entry forms.

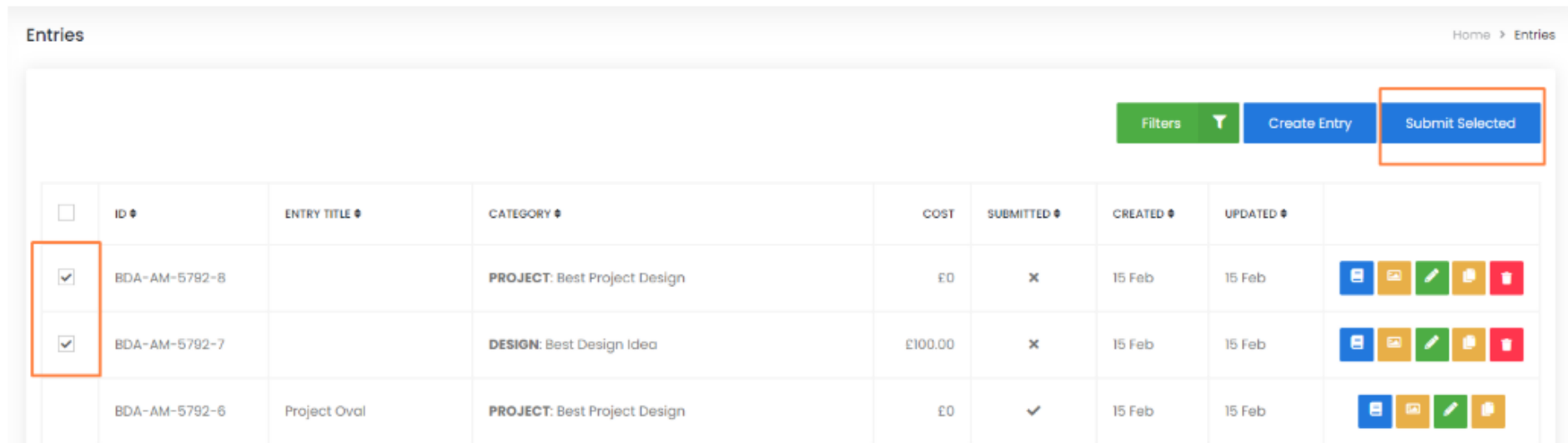
Click on '**Entries**' in the left menu, find the entry you would like to clone, and click on the clone entry icon to the right. You will be asked to change the entry title and select the new category.

If there are new or different questions that relate to the new category, they will be presented to you to complete, and you will need to complete those before submitting.















STEP BY STEP GUIDE

SUBMIT MULTIPLE ENTRIES TOGETHER

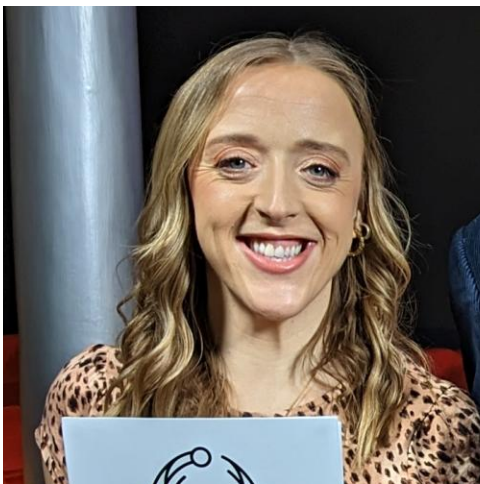
Click on 'Entries' in the left menu. Select the entries that you'd like to submit, then click on the 'Submit Selected' button at the top right of the screen.



The screenshot shows the 'Entries' management interface. At the top right, there are three buttons: 'Filters' (green), 'Create Entry' (blue), and 'Submit Selected' (blue), which is highlighted with an orange box. Below the buttons is a table with the following columns: ID, ENTRY TITLE, CATEGORY, COST, SUBMITTED, CREATED, UPDATED, and a row of action icons. The table contains three entries. The first two entries have their selection checkboxes checked and are highlighted with an orange box. The third entry is not selected.

<input type="checkbox"/>	ID	ENTRY TITLE	CATEGORY	COST	SUBMITTED	CREATED	UPDATED	
<input checked="" type="checkbox"/>	BDA-AM-5792-8		PROJECT: Best Project Design	£0	×	15 Feb	15 Feb	    
<input checked="" type="checkbox"/>	BDA-AM-5792-7		DESIGN: Best Design Idea	£100.00	×	15 Feb	15 Feb	    
<input type="checkbox"/>	BDA-AM-5792-6	Project Oval	PROJECT: Best Project Design	£0	✓	15 Feb	15 Feb	   

CELTIC MEDIA FESTIVAL TEAM



Catriona Logan
Festival Director



Naomi Henry-Wright
Festival Manager



Áine Walsh
CMF Chair

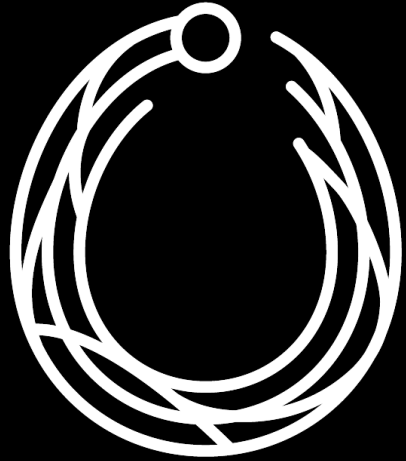


DEADLINE

The deadline for complete submissions which includes filling in the entry form, uploading media files and payment of the entry/entries is:

Thursday 6th of November at 12PM

For more information click [here](#).



**Celtic
Media
Festival**

The International
Summit of Sound
and Screen

THANK YOU

info@celticmediafestival.co.uk | www.celticmediafestival.co.uk/call-for-entries